



Track

A classic relaxed lounge
& upright work chair.

orangebox



➔ TRACK-01

Product Description

Track Lounge and Track Work share the same design language, with the former being perfect for worktable use and the latter offering a more relaxed lounge sit.

Track is manufactured from structural plywood shells with fabric-covered moulded foam, with the seat connected to the back by a discreet metal bracket. As with Hay, the chairs come with either an inclined or flat cast metal four-star base.

Product Specification

➔ Standard Product Description

Foam: Vitafoam Reflex.

Shell: Moulded Plywood.

Base: Die-cast Aluminium Finished in RAL 9006 or Stone. RAL 9006, Stone, Black or White Flat 4 star base (TRACK-03 and 04 only).

Glides: Glides are fitted as standard in RAL 9006 or Stone TRACK-01/02, anti-slip available at no additional cost TRACK-03/04.

➔ Optional Upcharges

Castors: RAL 9006 or Stone (TRACK-01/02).

Glides: Chrome (TRACK-01/02).

Base: Polished 4 star base, Polished flat 4 star base with Black column, Polished flat 4 star base with Polished column (Track 03/04).

Flat 4 Star Base and Column: Gold, Taupe, Industrial Silver, Bronze or Copper (TRACK-03/04 only).

Upholstery: Two tone upholstery.



➔ York City Council - TRACK-03

Product Range

TRACK-01

Swivel work chair



H790 [H31]
W620 [W24] D571 [D22]
SH450 [SH18] SD430 [SD17]

TRACK-02

Swivel lounge chair



H795 [H31]
W620 [W24] D777 [D31]
SH410 [SH16] SD450 [SD18]

TRACK-03

Swivel work chair on flat 4 star base



H795 [H31]
W620 [W24] D571 [D22]
SH450 [SH18] SD430 [SD17]

TRACK-04

Swivel lounge chair on flat 4 star base



H795 [H31]
W620 [W24] D777 [D31]
SH410 [SH16] SD450 [SD18]

mm["]

SH - Seat Height — SD - Seat Depth



➔ Detail - TRACK

Finishes

➔ Metal



Chrome



RAL 9006



Stone



White



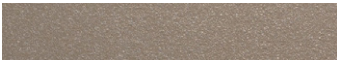
Black



Industrial Silver



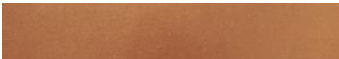
Gold



Taupe



Bronze



Copper



➔ Detail - TRACK